

Fiberglass cubicle for cathodic protection power supply units

These cubicles, particularly suitable for outdoor installation, consist of molded panels assembled by dap and are used for the housing of power supply units, measurements equipment and accessories.

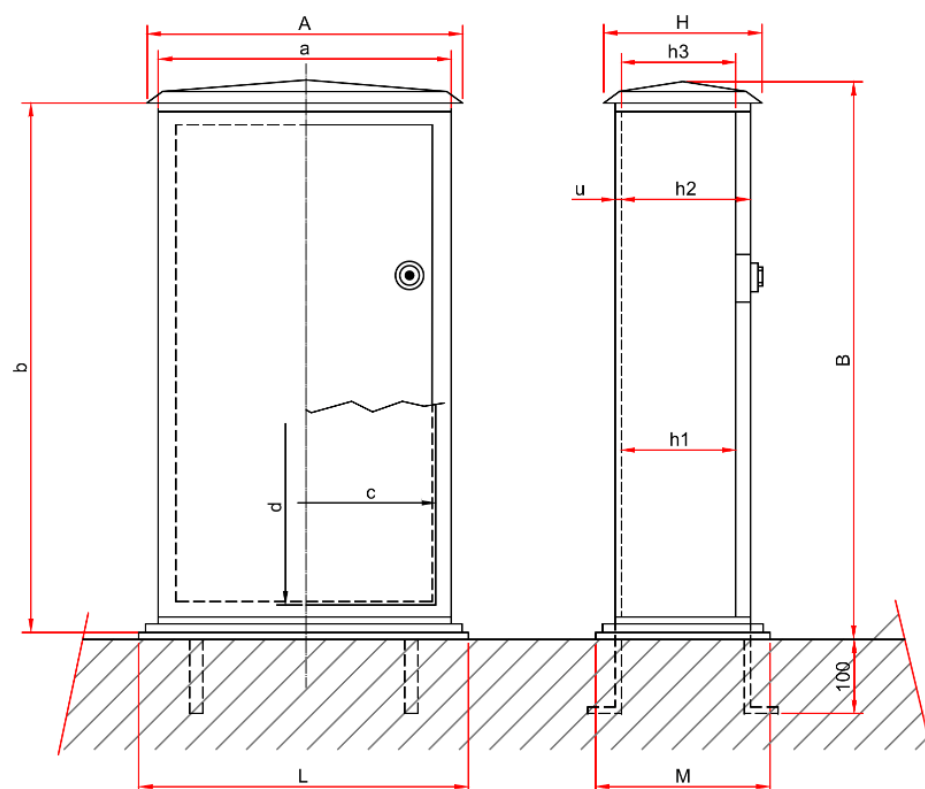
Mechanical protection degree is IP 44, the hinged door includes a Yale type lock and ventilation air intakes. The cubicle is supplied with a frame for the installation on any type of floor, a base for an electric meter, shelves and a documents holder pocket.

Upon customer requests different cubicle models are available or can be designed.

TECHNICAL CHARACTERISTICS OF POLIESTER RESIN FIBERGLASS REINFORCED

- fiberglass content		25%
- resistance to tensile stress	- ASTM D 638	800 Kg/cm ²
- resistance to bending stress	- ASTM D 790	1500 Kg/cm ²
- resistance to impact stress	- ASTM D 256	80 Kg/cm ²
- resistance to compressive stress	- ASTM D 695	1600 Kg/cm ²
- hardness	- ASTM D 785	60 HRE
- resistance to arc stress	- ASTM D 495	120 ÷ 180 sec
- dielectric strenght	- ASTM D 149	18 KV/mm
- selfextinguishment	- ASTM D 635	3 ÷ 4 sec

Piece Number	A	B	H	L	M	a	b	c	d	h1	h2	h3	u
P-8853-017	860	1394	451	816	418	780	1365	720	1253	346	375	368	13
P-8853-004	546	570	424	540	412	517	543	458	458	350	375	371	3
P-8853-016	546	900	424	544	418	517	873	458	788	350	375	371	10



Telemagnetica S.r.l.

Via Teocrito, 36 - 20128 Milano
Tel. 02.255.29.00 - Fax 02.255.30.97
info@telemagnetica.com - www.telemagnetica.com